

**Installation, control, use and
maintenance manual**

Rolling shutters



Index

1. Exploded view of rolling shutter with its components	6
2. Information of interest to the user	7
2.1 Safety warnings	7
2.2 Fault Table	7
2.3. Precautions	8
2.4. Recommendations	8
2.5. Maintenance	8
2.6. Information for the dismantling and disposal of the rolling shutter at the end of its cycle	8
3. Information for the professional - Installer	9
3.1 Box above the window:	9
3.3 Installation of guides	9
3.2 Box located as a mini outside	9
3.4 Manual lifting drives	10
3.5 Motorisations	10
4. Intended use and usage environment	11
5. Recommendation	11
6. Transport and installation	11
7. Dismantling and removal of the shutter	11

This document and all accompanying documents are an essential part of the rolling shutters and must be made available to the user. This documentation must be kept with the rolling shutter throughout its lifetime for future reference.

This manual is an integral part of rolling shutter models: Alugix, Alugan and PS models.

It is intended for its user. It is an essential tool for the correct use and maintenance of the product. It is forbidden to remove, rewrite and modify the pages of its content.

It is important for the safety of persons and the integrity of the product to read these instructions carefully before installing, operating, repairing or first use of the rolling shutter.

This rolling shutter model is the result of a meticulous design process and has been subjected to strict controls for its final validation and placing on the market. No modifications to its configuration or components should be made without consulting Saxun S.L.U. or its authorised representative.

Repair, installation and initial commissioning of our rolling shutter systems must always be carried out by qualified personnel without exception and in accordance with these instructions. If you have any questions, please contact your supplier or ask for technical/additional assistance at **www.saxun.com**

If the rolling shutter you have purchased incorporates a motorised system, you must take into account its specific instructions and the electrical risks inherent in certain circumstances. Carefully consult the motor manufacturer's instruction manual and safety warnings before installation, operation, repair or initial start-up.

Do not allow children to have access to and/or tamper with the controls, automation, installed drives or their components.

The installer is obliged to provide a maintenance service and to inform the purchaser of the maintenance operations and frequencies according to the intended use of the product.

All alterations and modifications made to the product without the manufacturer's authorisation shall exempt the manufacturer from any liability for any damage that may be caused.

1.Exploded view of rolling shutter with its components

Figure 1 Manual rolling shutter - tape

-
- | | |
|----|---------------|
| 1 | Coiler |
| 2 | Guides |
| 3 | Cap |
| 4 | Carrier tape |
| 5 | Disk |
| 6 | Braces |
| 7 | Stoppers |
| 8 | Terminal |
| 9 | Slat section |
| 10 | Metal shaft |
| 11 | Box |
| 12 | Safety plates |
| 13 | Axle cup |
| 14 | Ball bearing |
-

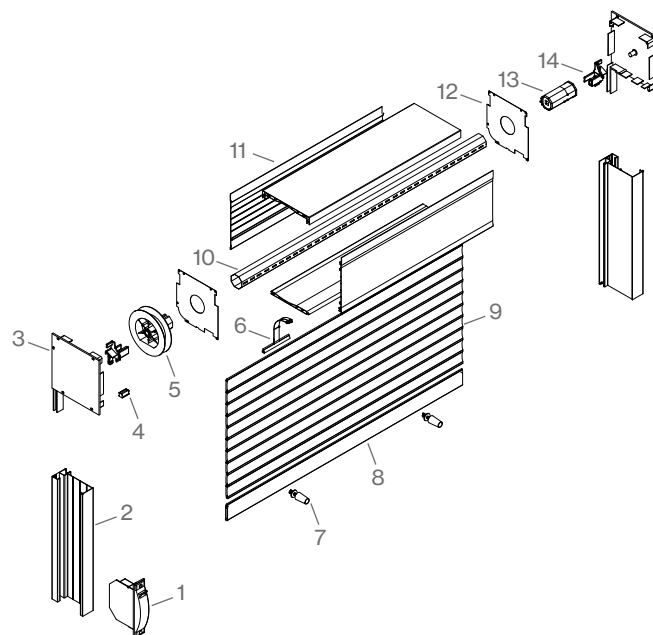
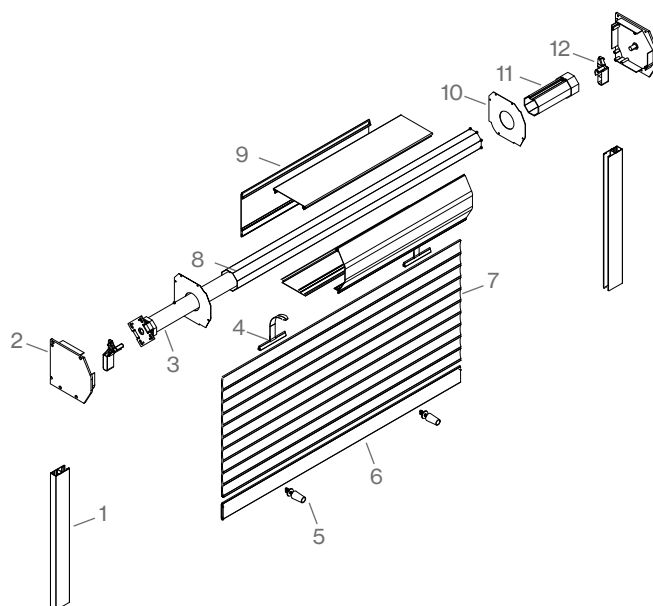


Figure 2 Motorised rolling shutter

-
- | | |
|----|---------------|
| 1 | Guides |
| 2 | Cap |
| 3 | Motor |
| 4 | Braces |
| 5 | Stoppers |
| 6 | Terminal |
| 7 | Slat section |
| 8 | Metal shaft |
| 9 | Box |
| 10 | Safety plates |
| 11 | Axle cup |
| 12 | Ball bearing |
-



2. Information of interest to the user

"Demand at all times that the installer and/or manufacturer be instructed in the correct use, application and operation of the rolling shutter and its drive".

The installer is obliged to:

- Have a maintenance service available.
- Inform the purchaser of the maintenance operations and frequencies according to the intended use of the product.
- Inform the purchaser of the rolling shutter model, its components and its wind resistance characteristics according to the list in Declaration of Performance (Pg. 13)

Do not allow children to have access to and/or tamper with the controls, automation, installed drives or their components.

Repair, installation and initial commissioning of our rolling shutter systems must always be carried out by qualified personnel without exception and in accordance with these instructions. If you have any questions, please contact your supplier or ask for technical/additional assistance at www.saxun.com

If the rolling shutter you have purchased incorporates a motorised system, you must take into account its specific instructions and the electrical risks inherent in certain circumstances. Carefully consult the motor manufacturer's instruction manual and safety warnings before installation, operation, repair or initial start-up.

When you have your rolling shutter checked periodically by a professional, make sure that the check includes verification of the screws, braces/guides and condition of the tape.

Noise emission from motorised rolling shutters is not considered to be a significant risk and is ultimately a comfort issue. The motors supplied by Giménez Ganga never exceed 70 dB.

2.1 Safety warnings

Make sure that the lifting system is installed indoors, protected from the sun's rays.

The lifting system (tape coiler/hoist/crank handle) has not been designed for outdoor use, therefore Giménez Ganga shall not be liable for its deterioration even within the guarantee period.

Make sure that during the up/down movement there are no persons in the vicinity of its path.

Do not rest objects on the rolling shutter.

If you have any questions, please contact your dealer.

The user has the duty to inform the Seller in the event that he notices defects or malfunctions in the operation of the shutter.

2.2 Fault Table

Manual Rolling Shutter

Breakdowns	Causes	Solutions
Shutter locking in manoeuvre.	Slat displacement. Obstruction in side guides.	Please contact assistance. Check that there are no objects inside the guides.
Falling or dropping of the shutter.	Breakage of braces or crimps.	Please contact assistance.
Insertion of rolling shutter in the box or housing.	Lack of stoppers at the end of the rolling shutter.	Please contact assistance.

Motorised Rolling Shutters

Breakdowns	Causes	Solutions
Shutter locking in manoeuvre.	Slat displacement. Obstruction in side guides.	Please contact assistance. Check that there are no objects inside the guides.
Falling or dropping of the shutter.	Breakage of braces or crimps.	Please contact assistance.
Insertion of rolling shutter in the box or housing.	Lack of stoppers at the end of the rolling shutter.	Please contact assistance.
The motor makes a lot of noise.	Motor failure.	Please contact assistance.
The motor stops after a time of continuous use.	Activation of protection	Let the motor cool down for a few minutes.

2.3). Precautions.

In the case of motorised rolling shutters, the raising and lowering is controlled by pressing a switch and/or using a radio control. Both should be placed out of the reach of children.

If security devices such as locks or bolts are fitted, make sure that they are unlocked before starting any operation.

2.4). Recommendations.

Use a lockable switch (e.g. with a key) for operation in areas where there is public traffic or if used regularly by children.

2.5). Maintenance.

To prevent corrosion, periodic cleaning of the sections with water and neutral soap is recommended. This should be done at least once a year and more frequently for materials exposed to aggressive atmospheric conditions (marine, industrial, airborne dust, etc.). It is important to thoroughly rinse the products with water after using detergents to clean them, to avoid the build-up of salts on the surface of the slats.

This periodic cleaning, if done correctly, removes exogenous agents from the material's surface that may attack their coating and the aluminium, prolonging the lifespan of the rolling shutter and its aesthetic functions.

Safety warning for cleaning operations at different levels.

Cleaning with ladders, scaffolding or other elements is reserved for specialised personnel who must carry out the operations in accordance with the regulations of the law on safety.

Ensure that the shutter is immobilised during maintenance operations.

When inspecting or servicing electrical parts, make sure that the shutter is disconnected from the mains.

2.6). Information for the dismantling and disposal of the rolling shutter at the end of its cycle.

Dismantling of the rolling shutter must be carried out by qualified and trained personnel.

Request the intervention of a specialist from Technical Assistance.

Follow the regulations in force at the time of scrapping the rolling shutter with regard to disposal methods.

3. Information for the professional - Installer

The installer is obliged to provide a maintenance service and to inform the purchaser of the maintenance operations and frequencies according to the intended use of the product.

Repair, installation and initial commissioning of our rolling shutter systems must always be carried out by qualified personnel without exception and in accordance with these instructions. If you have any questions, please contact your supplier or ask for technical/additional assistance at www.saxun.com

This rolling shutter model is the result of a meticulous design process and has been subjected to strict controls for its final validation and placing on the market. No modifications to its configuration or components should be made without consulting Saxun S.L.U. or its authorised representative.

The installer shall know and follow all installation instructions and recommendations specified by the manufacturer.

Check that the product is in the correct condition before installation, verifying that it has not suffered any blows caused by transport or lack of accessories.

The installer shall verify the manufacturing measurements of the product and installation of the opening, informing the manufacturer of any anomaly that differs from the contracted measurements or conditions of sale.

The installer must make a general survey of the site conditions to determine the anchoring requirements for the installation, paying special attention to checking the load-bearing strength of the walls or structures, verifying that they are suitable for anchoring the rolling shutter.

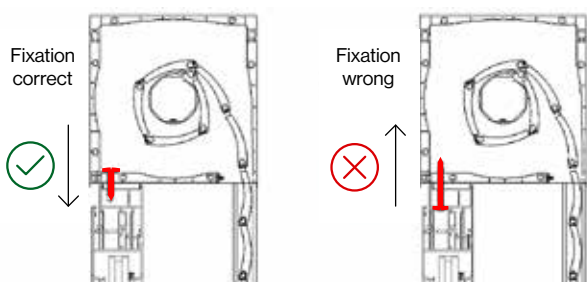
Under no circumstances should progress be made in the installation in the event of anomalies or deficiencies in any of its components or installation conditions, in order to avoid situations that could pose safety risks for installers, users or the functionality of the installation itself.

Always use stainless steel or bridged screws for anchoring the components to the site.

The installer must take into account the maximum widths recommended by Saxun, and inform the user of the rolling shutter model to be installed and its technical characteristics with respect to the Declaration of Performance list (Page. 13).

Assembly Instructions:

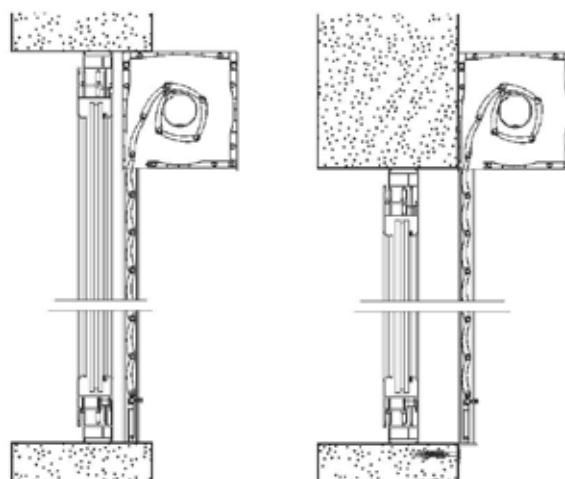
3.1 Box above the window:



⚠ Warning

Requirement for fixation: Non-invasion of the space of screw or rivet winding.

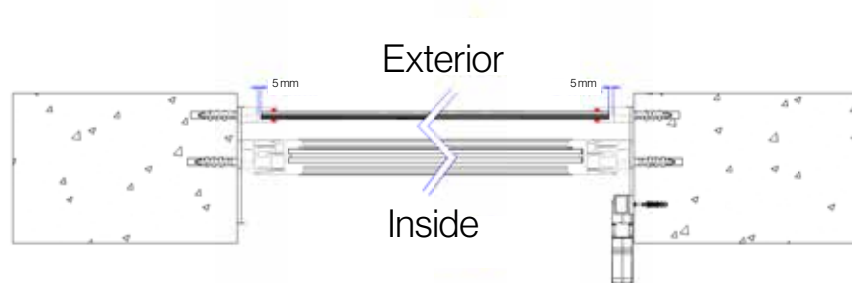
3.2 Box located as a mini outside.



3.3 Installation of guides.

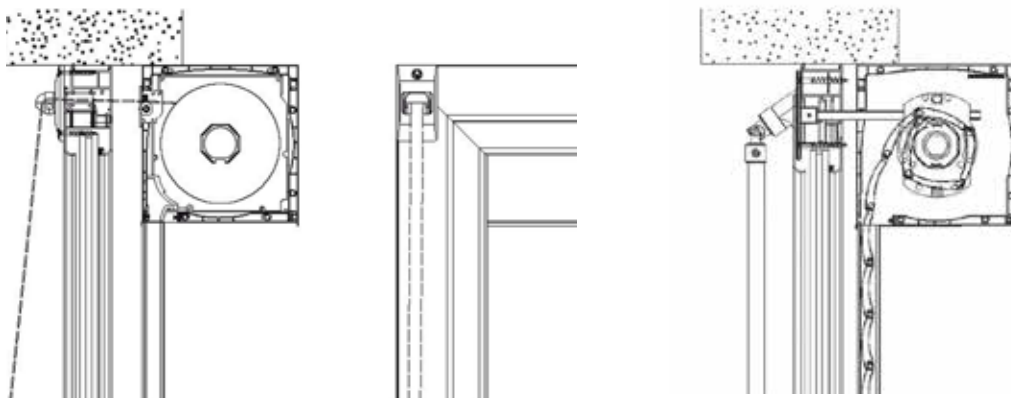
In the case of installations of guides superimposed on the façade, the screw must be housed in the internal chamber of the profile, avoiding at all times any debris that could cause friction with the slats.

The separation distance between the slat and the bottom of the chamber is 5 mm to ensure correct operation.



3.4 Manual lifting drives.

The lifting system (tape coiler/hoist/crank handle) is not designed for outdoor use, therefore Saxun will not be liable for damage even within the warranty period.



3.5 Motorisations.

The electrical connection of the motor must be carried out in all cases and without exception by qualified personnel, verifying that the installation is earthed, in compliance with local or national electrical safety regulations.

Before proceeding with the installation, the installer must ensure that he has read and understood the motor manufacturer's warnings and instructions.

Under no circumstances should the installation be progressed in case of evidence of anomalies or deficiencies in any of its components or installation conditions, in order to avoid situations that could represent safety risks for installers, users or the functionality of the installation itself.

Verify that the electrical system is compatible with the installation to be carried out and that it is in a safe condition to proceed.

In motorised installations it is important to check that there is a socket outlet with the required voltage at a maximum distance of 1.20 metres from the preset position of the motor.

When carrying out motorised installations operated by remote controls, proceed according to the steps included in the operating manual and instructions given by the manufacturer. In case of outdoor installation of power plants or motors, remember to insulate them from possible contact with water.

Use a lockable (key-operated) switch if the rolling shutter is installed in buildings such as schools, colleges, hospitals, etc.

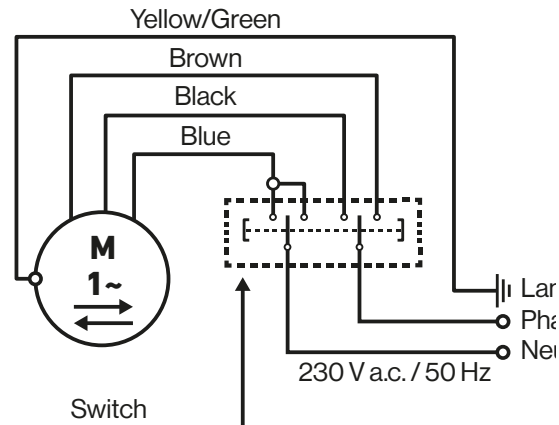
The installer shall ensure that the purchaser has the specific technical manuals for the automation controls installed and shall answer any questions the purchaser may have regarding their proper operation.

The installer shall pay particular attention to informing the purchaser of the basic safety conditions for operation.

All alterations and modifications made to the product without the manufacturer's authorisation shall exempt the manufacturer from any liability for any damage that may be caused.

For shutters controlled by a continuous pressure switch, it should be installed within sight of the shutter movement, but avoiding installation on any moving part and at a height of less than 1.30 m if possible.

The installer shall recommend a manual override device or a substitute power supply, which must be accessible at a height of less than 1.80 m, in case of frequent power failures.



4. Intended use and usage environment

The function of the rolling shutter is to protect against solar radiation, wind, cold, and to provide privacy and security in the home. The installed product is intended exclusively for up/down movement.

5. Recommendation.

Use a lockable (key-operated) switch if the rolling shutter is installed in buildings such as schools, colleges, hospitals, etc.

6. Transport and installation.

As Gimenez Ganga, S.L.U. does not install the products, we are not responsible for any damage or defect caused, as this is the responsibility of the installer.

It is the installer's responsibility to ensure proper packaging, transport and installation of the shutter.

7. Dismantling and removal of the shutter.

Dismantling of the rolling shutter must be carried out by qualified and trained personnel.

Follow the regulations in force at the time of scrapping the rolling shutter with regard to disposal methods.

For further information see **Annex V Dismantling and disposal of packaging and product components at the end of its useful life.**

In Sax 1 July 2013

Declaration of conformity

(Pursuant to Directive 2006/42/EC relating to machinery)

Who, in turn, is the legal person empowered to compile the Technical Record,

It states that the motorised extruded aluminium slat rolling shutters of the models:

- **PS-40; • PS-40 Micro; • PS-40 Self-closing**
- **PS-45 Self-closing**
- **PS-64**
- **PS-65 Self-closing**

Comply with the relevant provisions of Directive 2006/42/EC.

And have been developed and manufactured in compliance with the chapters **EN - 13659:2004 + A1:2008** as listed in its **ANNEX ZC** and confer a presumption of conformity with **Directive 2006/42/EC**.

In addition, in its development and manufacture, the European Construction Product Regulation No. 305/2011 is fulfilled and, insofar as applicable to the activation system into which they are installed, complies with the following directives:

- **Directive 2014/30/EU - Electromagnetic Compatibility.**
- **Directive 2014/35/EU - Low voltage.**
- **Directive 2014/53/EU - Radio equipment and telecommunications terminals.**



Signed: Francisco Giménez Pla
Responsible for CE marking

In Sax 1 July 2013

Declaration of conformity

(Pursuant to Directive 2006/42/EC relating to machinery)

Who, in turn, is the legal person empowered to compile the Technical Record,

It states that the motorised rolling shutters with profiled aluminium slats of the models

• Alugix 39.5	• Alugix 45	• Alugix 50	• Alugix 55	• Alugix 56
• Alugix 546	• Alugan 45	• M-45	• E-45	• PS-78

Comply with the relevant provisions of the **Directive 2006/42/EC**.

And have been developed and manufactured in compliance with the chapters **EN - 13659:2004 + A1:2008** as listed in its **ANNEX ZC** and confer a presumption of conformity with **Directive 2006/42/EC**.

In addition, in its development and manufacture, the **European Construction Product Regulation No. 305/2011** is fulfilled and, insofar as applicable to the activation system into which they are installed, complies with the following directives:

- Directive 2014/30/EU - Electromagnetic Compatibility.
- Directive 2014/35/EU - Low voltage.
- Directive 2014/53/EU - Radio equipment and telecommunications terminals.

CE

Signed: Francisco Giménez Pla
Responsible for CE marking



In Sax 1 July 2013

Declaration of conformity

(Pursuant to Directive 2006/42/EC relating to machinery)

Who, in turn, is the legal person empowered to compile the Technical Record,

Declares that motorised PVC slat rolling shutters of the models

• Mini-39	• Mini-40	• Special Mini 40	• Mini 47
• P 50	• P 55	• P 60	• R 50V

Comply with the relevant provisions of Directive 2006/42/EC.

And have been developed and manufactured in compliance with the chapters of **EN - 13659:2004 + A1:2008** as listed in its **ANNEX ZC** and confer a presumption of conformity with **Directive 2006/42/EC**.

In addition, in its development and manufacture, the **European Construction Product Regulation No. 305/2011** is fulfilled and, insofar as applicable to the activation system into which they are installed, complies with the following directives:

- Directive 2014/30/EU - Electromagnetic Compatibility.
- Directive 2014/35/EU - Low voltage.
- Directive 2014/53/EU - Radio equipment and telecommunications terminals.



Signed: Francisco Giménez Pla
Responsible for CE marking

Services declaration list

DdP No.	Identification of the product
PE/01/2013	Alugan-45 (Aluminium Profiles)
PE/02/2013	Alugix-39.5 (Aluminium Profiles)
PE/03/2013	Alugix-39.5 (Aluminium Profiles) 2400 x 2500 Class 4 (Bricos)
PE/04/2013	Alugix-45 (Aluminium Profiles)
PE/05/2013	Alugix-50 (Aluminium Profiles)
PE/06/2013	Alugix-55 (Aluminium Profiles)
PE/07/2013	Alugix-56 (Aluminium Profiles)
PE/08/2013	E-45 (Aluminium Profiles)
PE/09/2013	M-45 (Aluminium Profiles)
PE/10/2013	PS-78 (Aluminium Profiles)
PE/11/2013	PS-40 (Extruded Aluminium)
PE/12/2013	PS-40 Micro (Extruded Aluminium)
PE/13/2013	PS-40 Self-Clinching (Extruded Aluminium)
PE/14/2013	PS-45 Self-Clinching (Extruded Aluminium)
PE/15/2013	PS-55 Silent (Extruded Aluminium)
PE/16/2013	PS-64 (Extruded Aluminium)
PE/17/2013	PS-65 Self-Clinching (Extruded Aluminium)
PE/18/2013	Wind Screen
PE/19/2013	Alugix-546 (Extruded Aluminium)
PE/20/2013	PS-48 Self-Clinching (Extruded Aluminium)
PE/21/2013	Mini-39 PVC
PE/22/2013	Alugix-546 (High Density 250)
PE/23/2013	M-45 (High Density 250)
PE/24/2013	Alugix-55 (High Density 250)
PE/27/2013	Mini-40 PVC 2400 x 1400 Class 3 (Bricos)

RS: Rolling shutters

SD: Security Doors

LV: Louvres

MA: Window and Door Shutters

SC: Suspended ceilings

MO: Mosquito screens

EN: Blinds

TOL.: Awnings



Giménez Ganga, S.L.U.
Polígono Industrial El Castillo
C/ Roma, 4 • 03630
Sax (Alicante) • Spain

saxun.com